



ST. JOHN'S
COLLEGE, ANCHAL

LET YOUR LIGHT SHINE BEFORE MEN



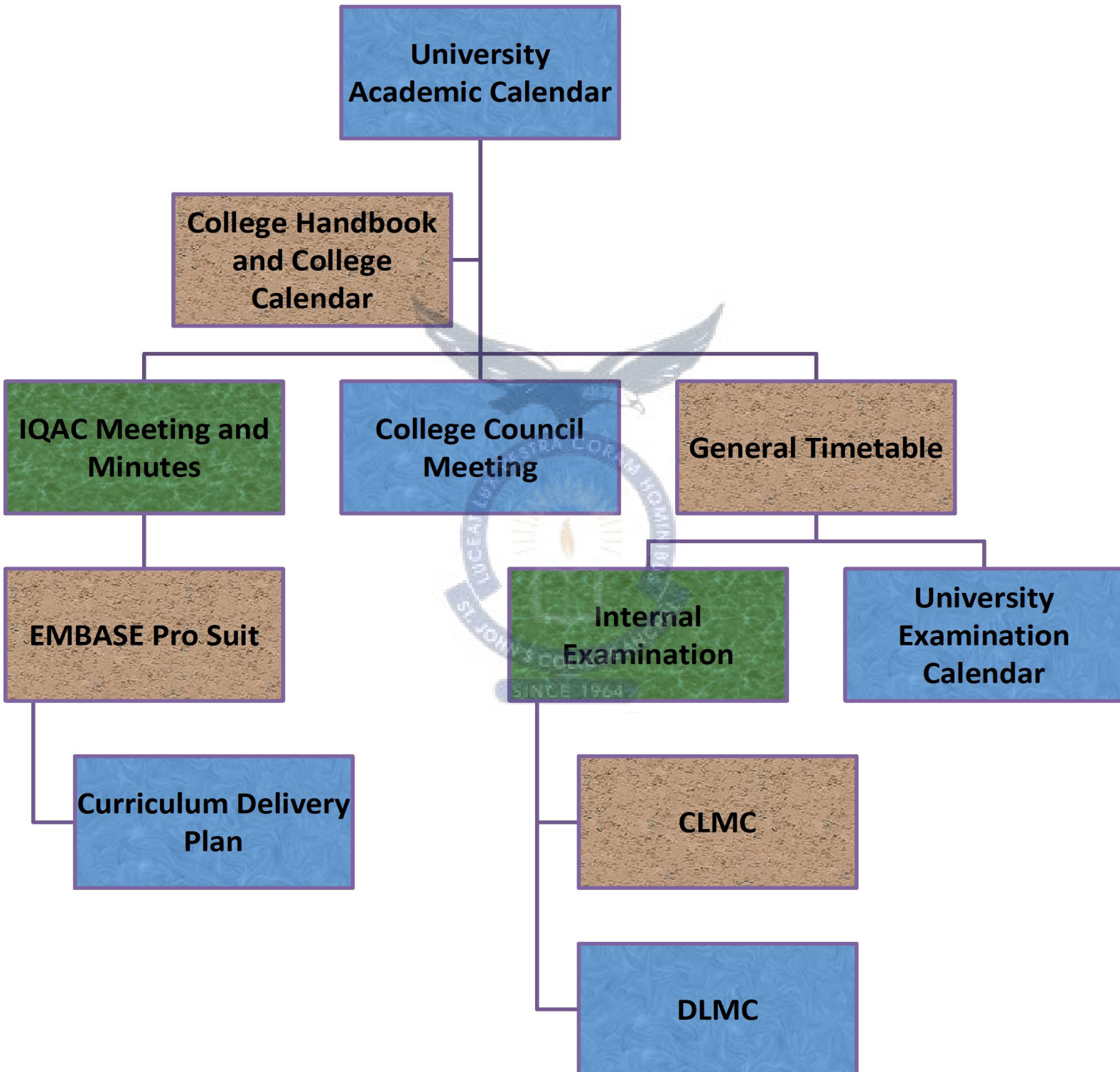
CRITERION 1

1.1: CURRICULAR PLANNING AND IMPLEMENTATION

Metric 1.1.1



CURRICULAR PLANNING AND IMPLEMENTATION





CURRICULUM PLANNING

- Academic Calendar
- College Handbook
- IQAC
- College Council
- CLMC & DLMC
- Academic Bodies

CURRICULUM DELIVERY

- General Timetable
- Department Timetable
- EMBASE Pro Suit
- ICT Enabled Teaching and Learning

EVALUATION

- Continuous Evaluation (CE)
- End Semester Evaluation (ESE)
- Seminars
- Assignments (Hybrid)
- Bridge Course



CRITERION 1

1.1.1: CURRICULAR PLANNING AND IMPLEMENTATION

LINK TO ADDITIONAL DOCUMENTS



❖ **CURRICULUM DELIVERY PLAN**

❖ **BRIDGE COURSE**